

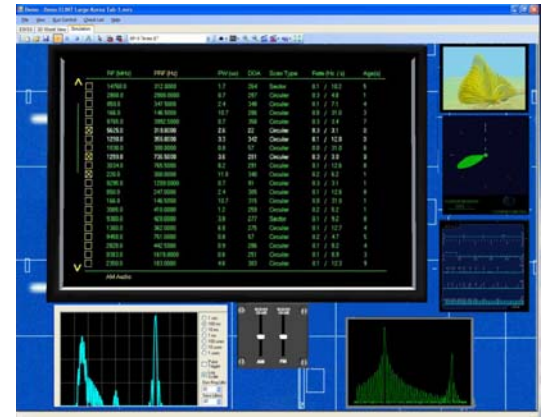


ELINT Proficiency Trainer

A Unique Training Resource

SYSTEM DESCRIPTION

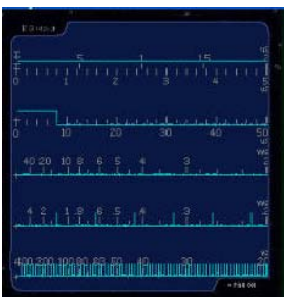
EWA GSI's ELINT Proficiency Trainer provides signal recognition training based on signal characteristics and signal audio. The trainer can be hosted on standalone PC(s) or used in a network environment for classroom training. EWA GSI's Electronic Warfare Scenario Simulator (EWSS) provides the desired signal environment. Each signal is scripted in the EWSS software by entering pulse characteristics, frequencies, scan pattern, scan time, beam widths in both the horizontal and vertical plain, and side-lobes if desired. The main display lists active signals with the following features:



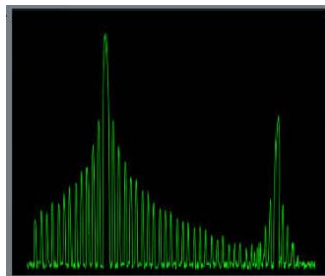
- **RF** in MHz
- **PRF** in Hz or **PRI** in μsec changeable by selection
- **PW** in μsec
- **Direction of Arrival (DOA)** in degrees
- **Scan Type** (Circular, Sector, Raster, etc)
- **Scan Rate** (Hz/seconds)
- **Age counter** (0 to 120 sec)
- **AM or FM** audio out selection
- Output selection on a per signal basis to enable audio/video out
- **Generic Oscilloscope and Volume Control** standard
- Optional **5 Trace, 3D Beam Viewer, DF** and **Pan Display** available

TAILOR YOUR TRAINER WITH OPTICAL DEVICES

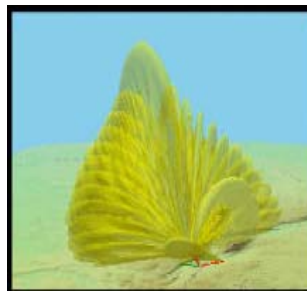
To fit specific user requirements, additional device simulations can be designed and dropped-in to enhance and tailor the training experience (see below). Additionally, EWA GSI can develop a wizard for direct parametric data importation from a user's parametric database into the corresponding emitter data fields within the EWSS program to simplify emitter creation.



Pulse Analyzer



Receiver Pan Display



3D Beam Viewer



DF Display

Point of Contact
EWA Government Systems Inc.
 Attn: Rebekah Getz
 E-mail: rgetz@ewa.com